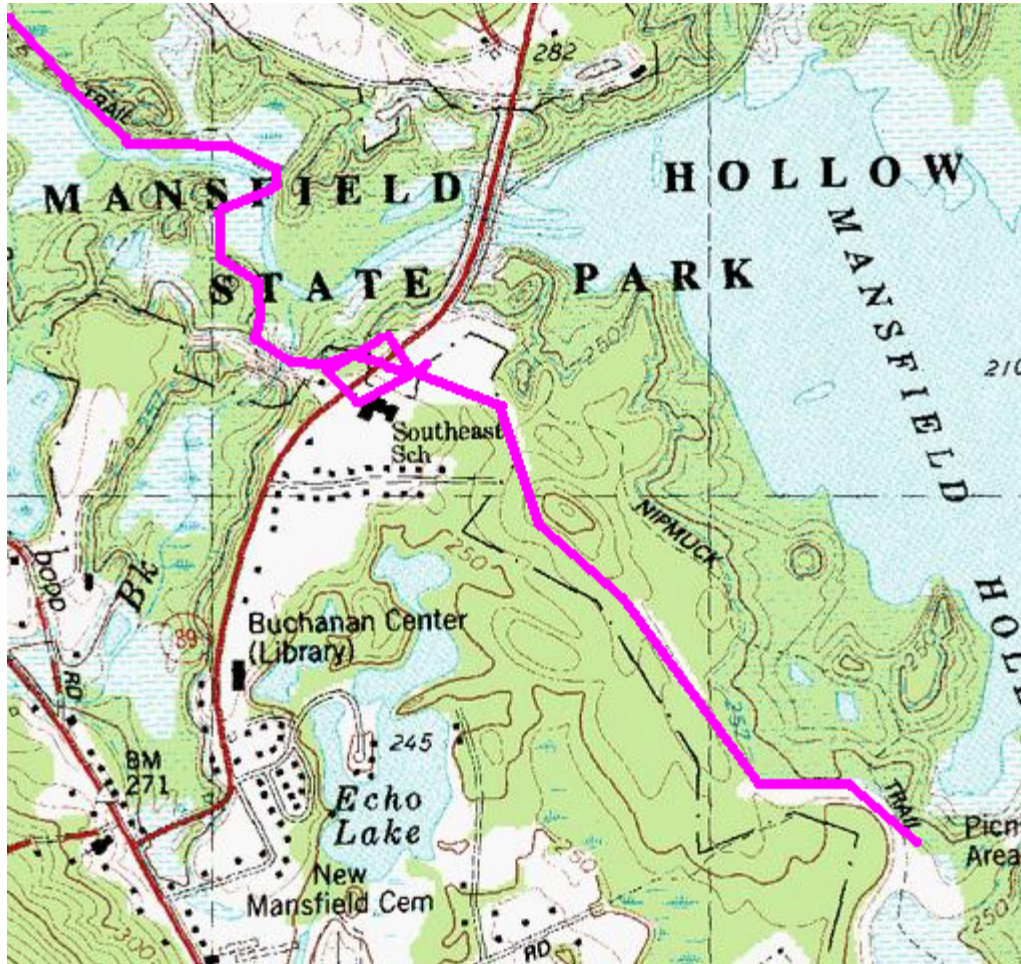
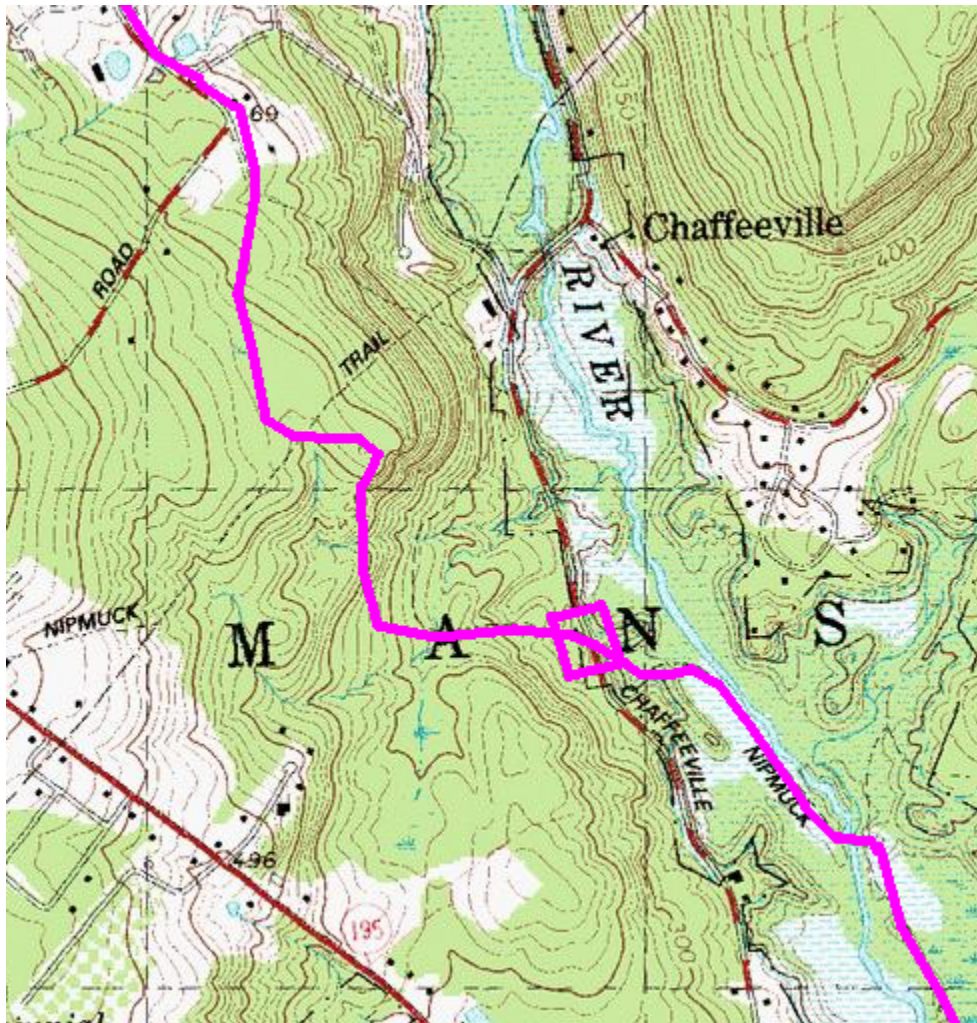


Nipmuck South Trail Race Maps

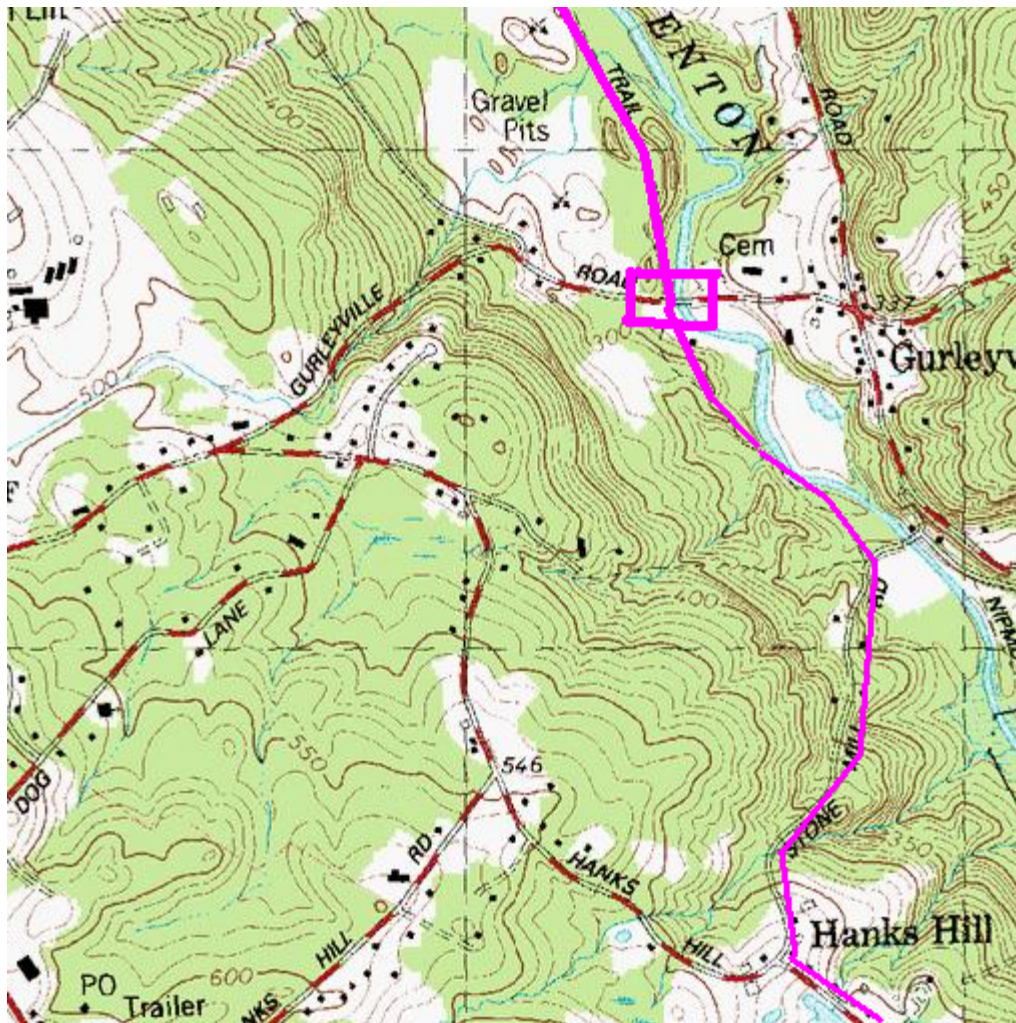
Note all street crossings will be supervised by Mansfield Fire Department staff. Any ambiguous parts of the trail will be marked with ribbons or signs. All signs and ribbons will be removed within one week after the race. Water and supplies will be available at the turn around point and Hanks Hill Road.



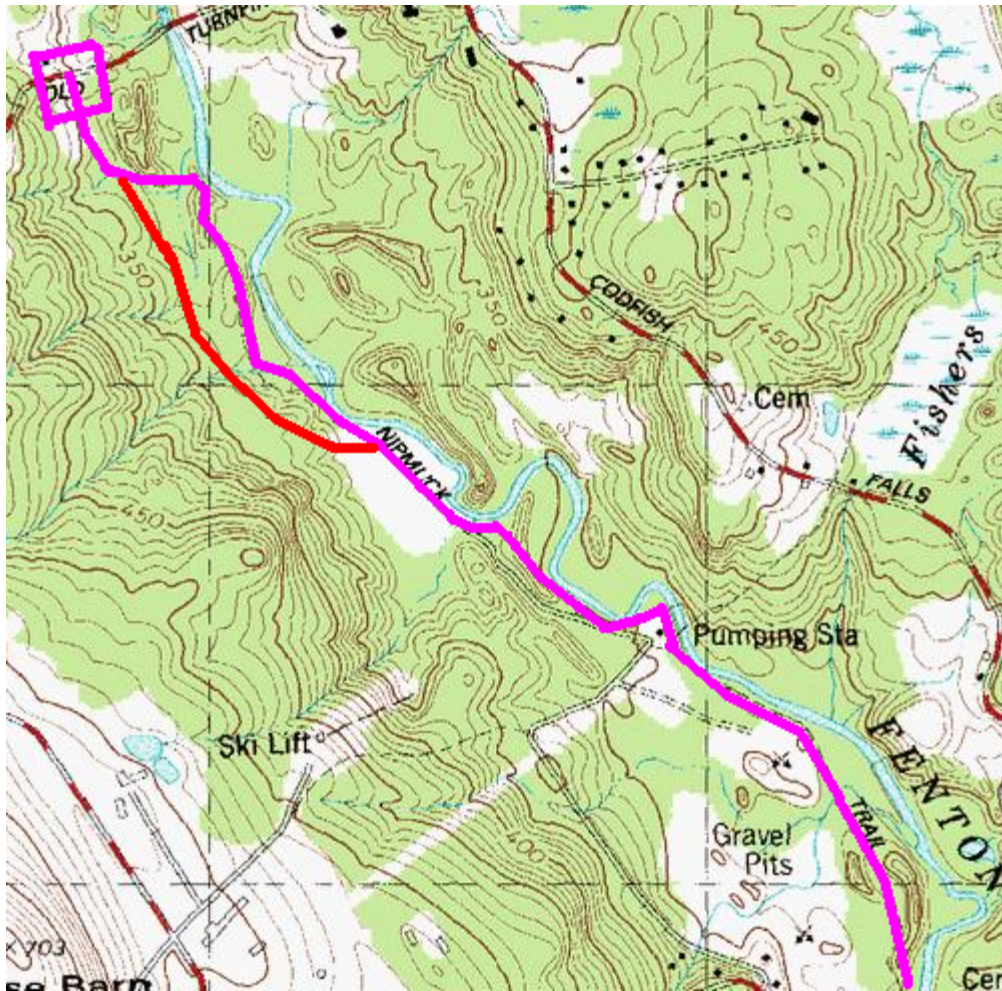
The race starts at the Mansfield Hollow Picnic Area. This area has water, two new outdoor toilets, and space for race preparation. This area also allows for a wide start line. The race follows the wide and flat path which heads directly to the South East School baseball field. Route 89 is crossed (marked above with a box) and the trail continues to a scenic metal/wood bridge crossing the river, then follows the river through a reed and wooded area.



The trail continues to a second wide wood/metal bridge, crossing to follow the trail close to the river on the opposite side. This section affords a view of a recent mini-tornado/microburst with many trees snapped at the trunk. The trail then moves uphill away from the river to cross Chaffeeville road (marked with a box). After crossing, the trail continues uphill until reaching the viewing area at the top of fifty foot cliff. The trail then continues to the end section of Hanks Hill Road and continues onto Hanks Hill Road, passing the waterfall on the left.



The race continues by turning right off of Hanks Hill Road and proceeding down Stone Mill Road (which quickly becomes a dirt road). Before the new bridge at the bottom, the course takes a sharp left and picks up the Nipmuck trail to continue through a pine wooded area across a small stream and to the crossing of Gurleyville Road (marked above with a box). Crossing Gurleyville, the trail follows close to the Fenton River once again.



The race continues to follow the river, passing through a wooded area and into an open field after which following the river through a very curvy section until reaching the turn around point at Old Turnpike Road (dirt road). The return trip is identical with the one exception of the lower line marked above. This detour allows for a return along a wide straighter path that leads back to the open field area.